

# Preschool Expansion: The Need for Mixed Delivery

As states and communities expand access to preschool, it is crucial for families to have access to a system of Mixed Delivery. **A Mixed Delivery system** is one in which early learning programs can be located in any school, licensed child care center, licensed family child care home, or Head Start program that meets agreed-upon quality criteria. It facilitates a healthy network of providers diverse enough to meet communities' and families' needs.

## Mixed Delivery is a Win For

### ✓ Children

A Mixed Delivery system better ensures **Continuity of Care** for children. Continuity of Care is the consistent engagement in high-quality early learning experiences and is best achieved through stable relationships with qualified caregivers. For children birth to five, it has been proven beneficial for long-term, social-emotional development. **Mixed Delivery enables children to remain with a single provider and avoids disruptions that negatively affect their development.**



In Seattle, high-quality providers who offer before and after school care are given priority with preschool funding. This enables a child to stay in a single program for the full day and avoids disruptions to their care.

### ✓ Families

Meeting the needs of families requires providing options that work for their schedules, their location, and the needs of their child. Forcing families to attend a single type of preschool program creates a large burden, often requiring an additional provider for backup or wraparound care. **Mixed Delivery puts families first by providing options that work best for them.**



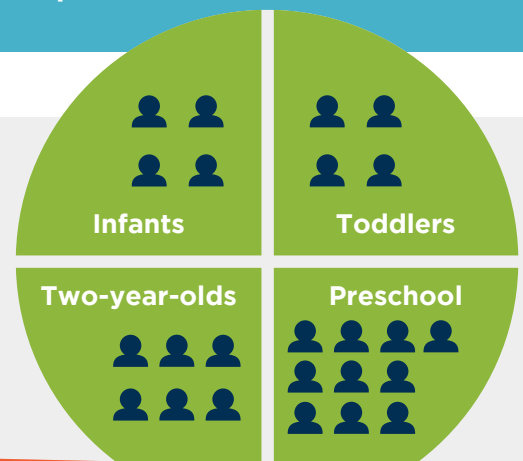
Denver uses a Child Care Resource & Referral agency to administer preschool vouchers for families. Using a third-party that puts families first avoids a conflict of interest in distributing funds.

### ✓ Child Care Providers

Preschool and child care are interconnected, which means policy around one can greatly affect the other. Due to the high cost of caring for an infant, child care programs rely on serving a range of age groups to keep costs down for parents of our youngest learners. If 3- and 4-year-olds are pulled out to attend preschool elsewhere, this will hurt child care providers and families. The cost of infant care will skyrocket, and programs will close.



Mixed Delivery avoids disruptions to the child care market, and better facilitates a quality birth-to-five system of early care and learning.



Higher staff-to-child ratios for Preschool supports the high cost of caring for infants and toddlers.

